

The background features decorative wavy line patterns in the corners, resembling wood grain or topographical lines, rendered in a light gray color. The main text is centered on a light gray background.

Λ M Ā R Λ
AMETHYST

A PHENOMENAL JEWEL OF A HOME



—
REDEFINING
LUXURY IN
CHENNAI.



A robust presence of over a decade as one of Chennai's most highly regarded real estate developers has placed Amara on an unmatched pedestal. It stands towering amongst its compatriots for developing ultra-luxury homes for only the crème de la crème of society. Amara homes, a family-owned business, is a leader in building opulent homes of grandeur for the niche of society, who ultimately influence and redefine the luxury lifestyle.

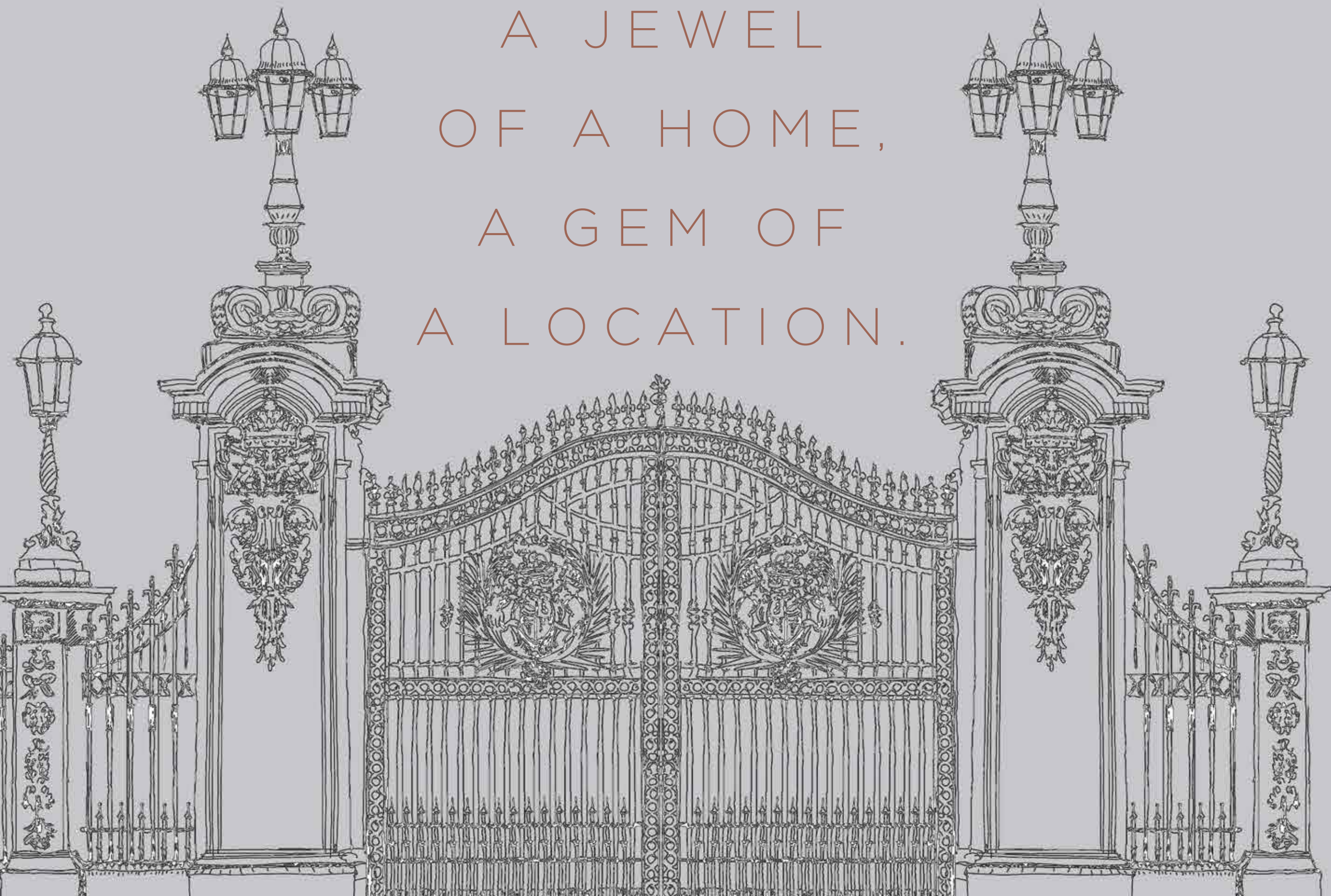
AMARA
homes

—
A JEWEL
OF A HOME,
A GEM OF
A LOCATION.



There is the Eiffel Tower in Paris, the Guggenheim in New York, the Buckingham Palace in London and now, Amethyst in a gem of a location - Gopalapuram. In stellar fashion, Amethyst is crafted to stun; with 8 spectacular levels that house 16 luxe apartments. Amethyst offers magnificent 4 BHK luxe homes that boast an impressive buildup area of 4,000 sq. ft. and above.

AMARA
AMETHYST





LUXURY
ELEVATED.

—
THE CROWNING GLORY
OF LUXURY LIFESTYLE.



Unrivalled luxury deserves to house unmatched amenities. Inspired by your zest for life, the warm rush of Chennai's golden sun and the lushness of nature, Amethyst provides amenities that cater to limited-edition living.

*A state-of-the-art
gymnasium*

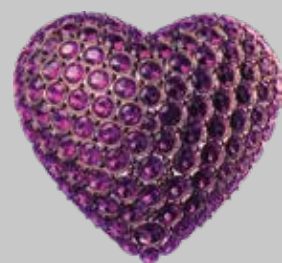
Lobby

*Landscaped terrace
with a barbecue pit
and party deck*

*A delightful
kids play area*

*Fully air-conditioned
homes*





THE LOCATION OF KING-MAKERS.



Map not to scale



LIFE AT AMARA



LIFE AT AMARA 



STILT FLOOR PLAN



TYPICAL FLOOR PLAN





LUXURY IS IN
THE EYE
FOR DETAIL.



*What you deserve and dream of has been crystal clear to us
and we are masters at predicting your innermost desires.
In every little detail, in every minute feature, we have placed
luxury at the heart of it all.*

SPECIFICATIONS

STRUCTURE

- R. C. C. framed structure.
- Designed - Seismic Resistant Structure - Zone III.
- Conformed - IS code 456 specification.

FLOORING

- Imported Marble in living and dining rooms.
- Imported Marble flooring in bedrooms.
- Double charge polished vitrified tiles in kitchen.
- Heavy duty outdoor vitrified tiles in balcony and utility.

DOORS

- Main/entrance door - 7'10" Hardwood frame and shutter with veneer panelling on both sides and Yale digital smart lock.
- Bedroom door - 7'10" first-quality engineered door frame and shutter with veneer finish and Yale Mortise lock.
- Toilet and other internal doors - 7'10" first-quality engineered door frame and shutter with laminate finish and Yale Mortise lock.

WALL

- Solid block work.
- Internal and external - Plastered wall.

DADOING

- Full height vitrified tiles in toilet wall.
- Anti-skid tiles in toilet and utility floor.

WINDOWS & VENTILATORS

- Schuco /ALUK/equivalent Aluminum windows.

C. P. FITTINGS & SANITARYWARE

- Kobler/Hansgrobe/Duravit/equivalent fittings.
- WC - Wall mounted with concealed cistern and health faucet.
- Stiebel Eltron Online Geyser in all bathrooms.

ELECTRICAL

- 3-phase supply.
- 100% generator backup.
- Legrand - Living Now - IoT-enabled switches & sockets with modular plates, MCB and ELCB.
- TV, telephone and data points provided.

AIR-CONDITIONING

- Mitsubishi - VRF System Air-conditioning.

FALSE CEILING & LIGHT FITTINGS

- Saint-Gobain Gypsum false ceiling with architectural light fixtures for all areas.

PAINTING & FINISHES

- Internal wall - 2 coat putty with water-based Royale Luxury Emulsion.
- External wall - Waterproof base coat with Asian Ultima Apex/equivalent.
- Ceiling - 2 coat putty with water-based premium emulsion.

RECREATIONAL FACILITIES

- Fully-equipped gymnasium.
- Furnished lobby entrance.
- Landscaped terrace with party deck and barbecue pit.
- Kids play area.

COMMON AREAS

- Gas bank.
- Mitsubishi passenger lifts - 2 nos.
- Imported Marble on all floor lobby areas and lift wall cladding.
- Granite finish staircases.
- CCTV surveillance.
- Motorized entry/exit gates.
- SS handrails on staircases.
- False ceiling with COD lights in all lobby areas.
- Rainwater harvesting.
- Separate lines for Metro water and ground water.
- UG Sump and OHT provision.
- Solar-powered common areas.
- 100% generator backup.



Λ M Ā R Λ
homes

+9194446 66677 life@amarahomes.in

www.amarahomes.in

RERA NO.: TN/29/BUILDING/0294/2022 | DATED 04.08.2022 | www.rera.tn.gov.in