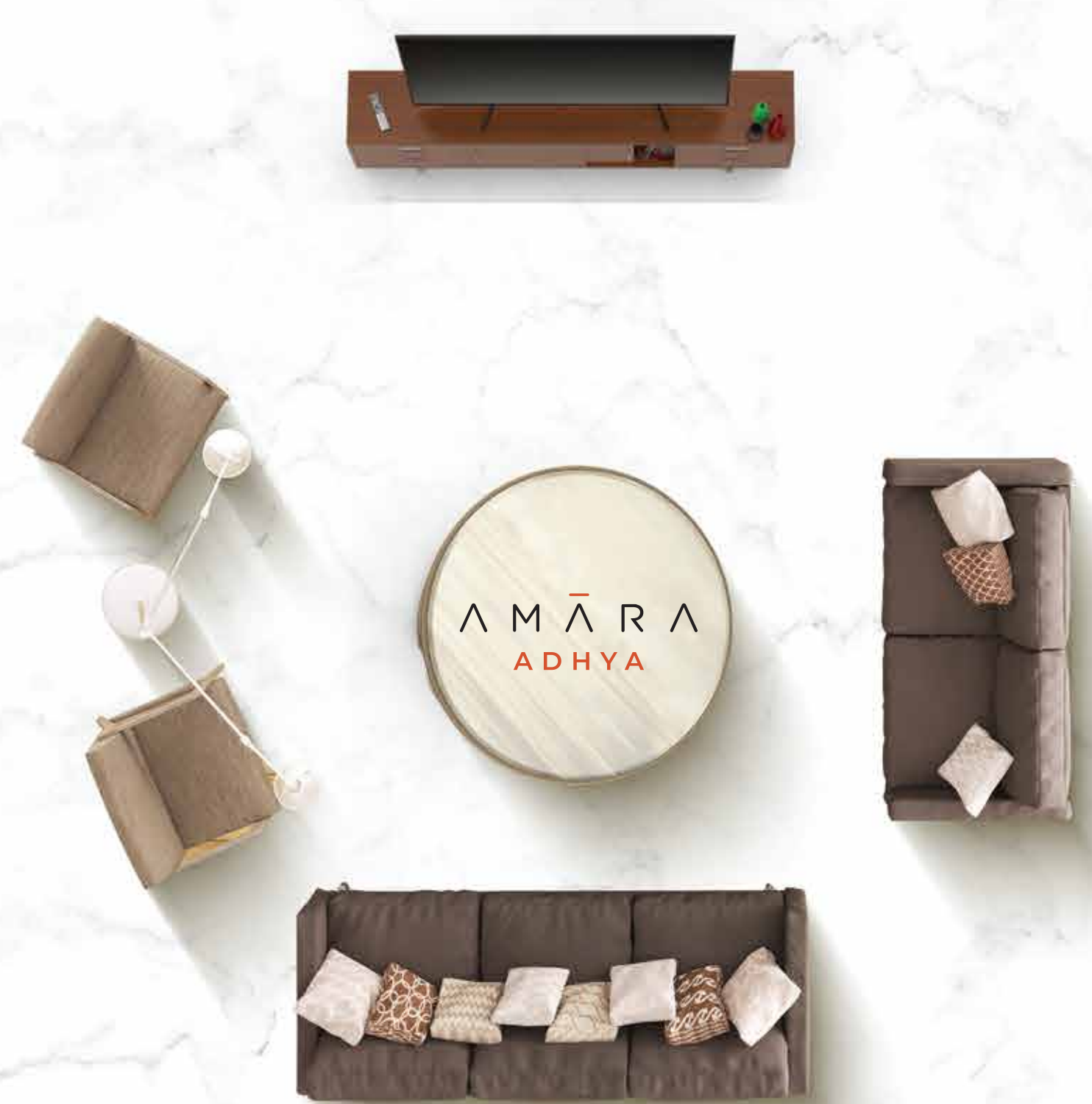


AMARA homes

+91 94446 66677 | life@amarahomes.in

www.amarahomes.in

RERA NO.: TN/29/BUILDING/0234/2023 | DATED 29.05.2023 | WWW.RERA.TN.GOV.IN



AMARA
homes



CRAFTING SPACES THAT GLISTEN WITH PERFECTION.

Deep in the heart of Chennai rest homes planned to sublime perfection. They tell a story of beauty and wonder. They stand out as a testament to the power of imagination. This is the manifestation of a vision of Amara homes. A vision steeped in looking beyond the standard laws of fine living and pushing through the boundaries of possibility. This is Amara homes, picture-perfect beauty and rare luxury.



PICTURE-PERFECT.
PRECIOUS. PRISTINE.

Adhya, a union of 10 masterfully-crafted homes is a tribute to the splendour of nature and the indulgences of the contemporary world. As you step inside, you are transported to another realm. A realm that inspires, uplifts and connects you to a life of picture-perfect beauty. This is where your passions and pursuits find space, moments become more precious and living is infused with more life. Welcome to a paradise at the heart of the city.

Welcome to Adhya.



AN ELEVATION THAT NATURALLY BELONGS.

Enveloped in a warm red plaster and dotted with greenery, Adhya is a place of bold beauty and true harmony. Featuring a staggering design, it floats to the sky and comes alive on the urban canvas, reflecting the sun and the night sky in all its glory.

LOCATION MAP



THE SHORTCUT TO AN EXCEPTIONAL LIVING EXPERIENCE.

Rising at the heart of Gopalapuram in Jeypore colony, Adhya encapsulates an extraordinary experience of the city. Once host to royals of Jeypore and now home to the elite, it reflects the magnificence of the past and the spirit of modern energy. Action-packed days and chilled out evenings come standard when you live flanked by greenery and the best loved spots in the city. No matter what you are in the mood for, Gopalapuram is set to bring every want and wish to life and place you at an address a short drive away from it all.



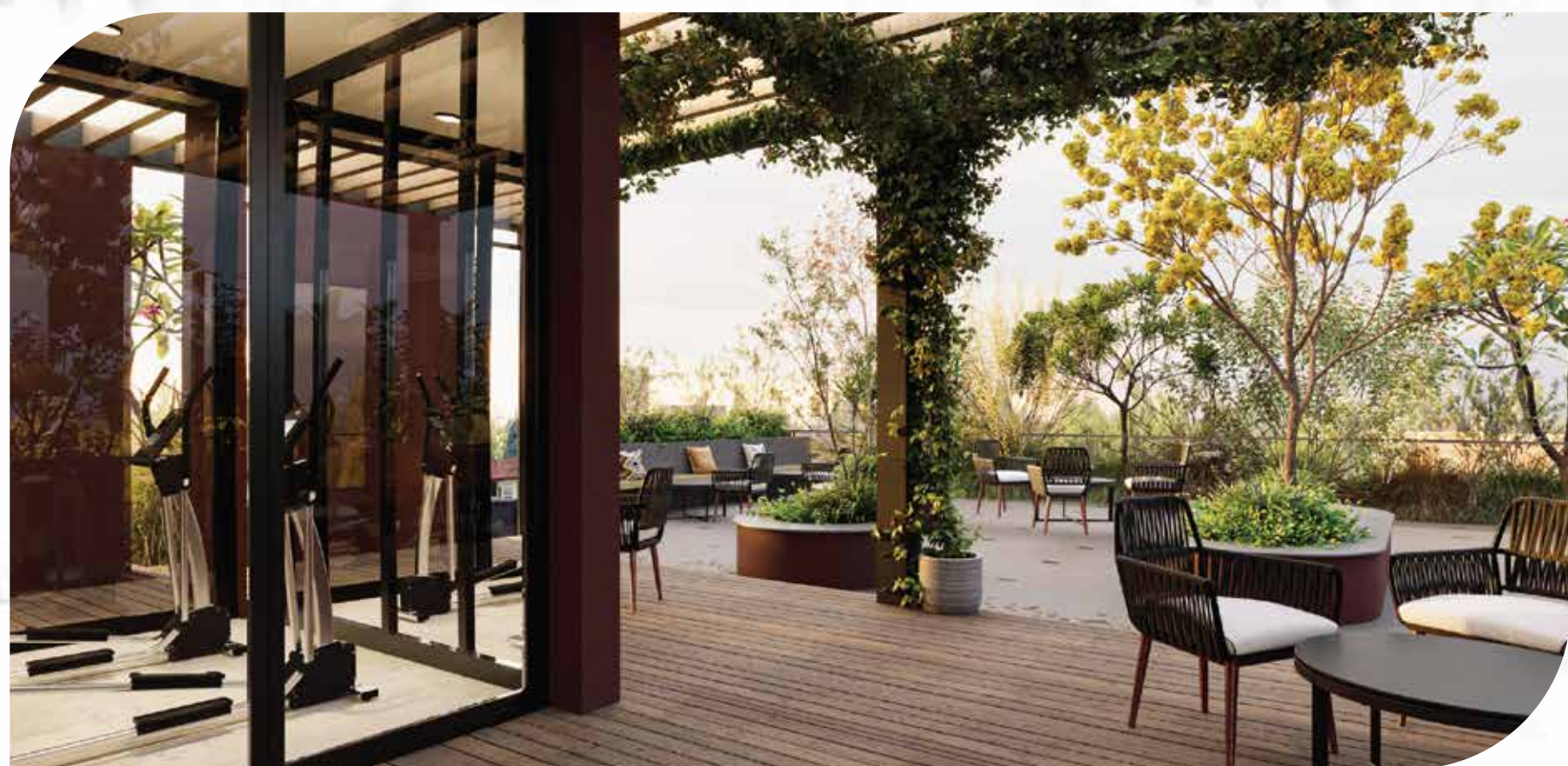
UNFOLDING A LIFE OF OPULENCE.

Discover a personal sanctuary, where commonplace is rare and extraordinary everywhere. Adhya is endowed with creature comforts that speak to your heart and luxuries that take your breath away. It is where you live surrounded by only the best in life.

Fully air-conditioned homes | 24/7 Power backup

Landscaped terrace with a barbecue pit and party deck | IoT-enabled smart homes



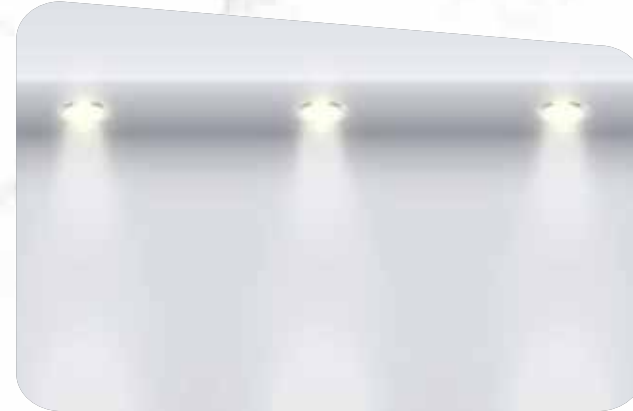




AN EXCLUSIVE ENTRANCE LOBBY



LANDSCAPED TERRACE PAVILION WITH PARTY DECK



FALSE CEILING WITH DESIGNER LIGHTING



GYMNASIUM



ROOFTOP LANDSCAPE



SOLAR-POWERED COMMON AREAS



CCTV SURVEILLANCE



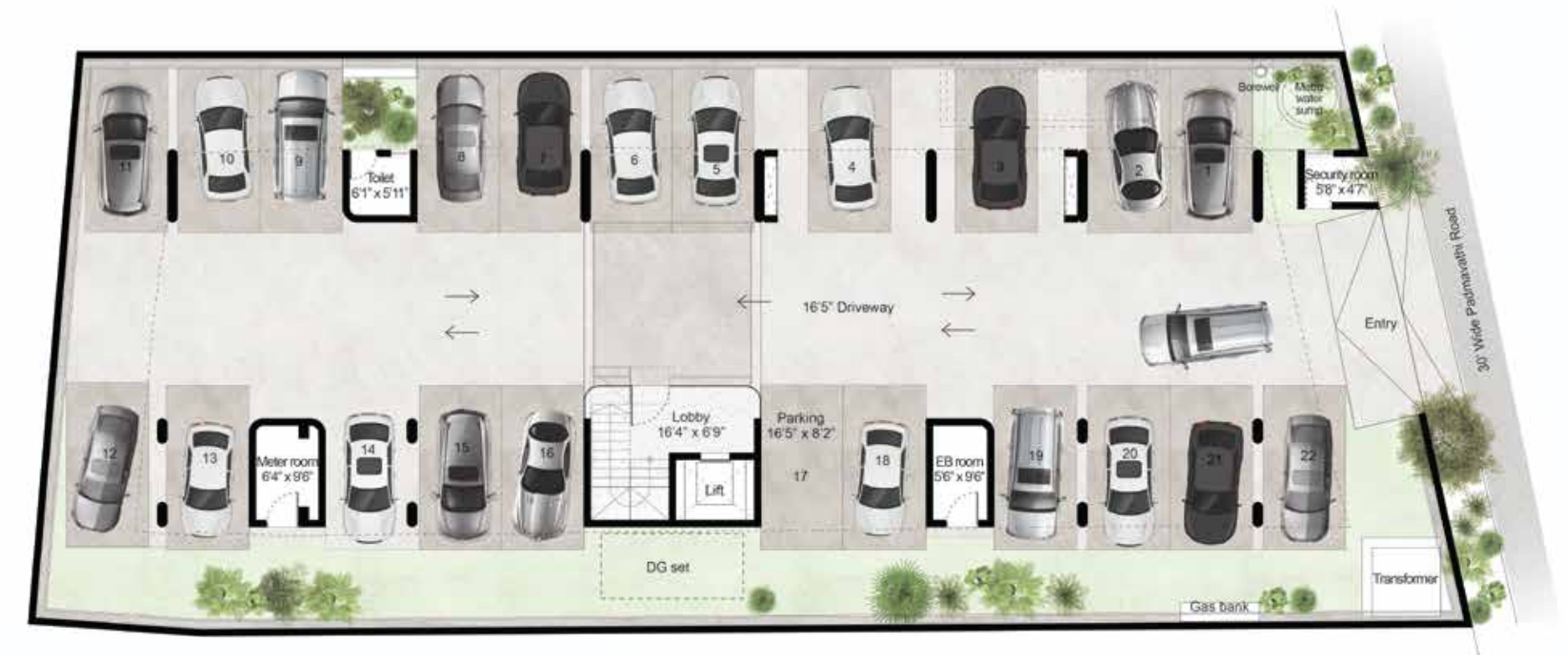
CENTRALIZED VRV AIR CONDITIONING SYSTEM



IoT-ENABLED SMART-READY HOMES



STILT FLOOR PLAN



TERRACE FLOOR PLAN



TYPICAL FLOOR PLAN



SALEABLE AREA: 2351 SQ. FT.

SALEABLE AREA: 2434 SQ. FT.



REplete WITH RARE AND
REFINED ELEMENTS.

STRUCTURE

R. C. C. framed structure.
Designed - Seismic Resistant Structure - Zone III.
Conformed - IS Code 456 Specification.

WALLS

Solid block work.
External - Plastered wall.
Internal - Gypsum plaster.

FLOORING

Imported Marble flooring in bedrooms, living
and dining rooms.
Double charge polished vitrified tiles in kitchen.
Heavy-duty outdoor vitrified tiles in balconies and utilities.

DADOING

Full height imported tiles on toilet walls and flooring.
1200mm. tiling in utility with Granite counter and sink.

ENTRANCE DOOR

7' 6" Hardwood frame and shutter with veneer panelling
on both sides with Yale or equivalent digital smart lock.

BEDROOM DOORS

7' 6" first-quality engineered door frame and shutter
with Veneer finish and Yale or equivalent Mortise lock.

TOILET AND OTHER DOORS

7' 6" first-quality engineered door frame and shutter
with Laminate finish and Yale or equivalent Mortise lock.

WINDOWS & SIT OUT

Fenesta/Saint-Gobain UPVC windows in wood finish

C. P. FITTINGS & SANITARYWARE

Grohe/Hansgrohe/Duravit/equivalent fittings.
WC - Wall mounted with concealed cistern
and health faucet.

ELECTRICAL

3-Phase supply.
100% generator backup.
Legrand - Living Now/Schneider switches
and sockets with modular plates, MCB & ELCB.
TV, telephone and data points provided.

AIR-CONDITIONING

Mitsubishi/Daikin VRV air conditioning.

PAINTING & FINISHES

Internal wall - 2-coat putty with water-based Royale
Luxury Emulsion.
External wall - Waterproof base coat with Asian
Ultima Apex/equivalent.
Ceiling - 2-coat putty with water-based premium emulsion.

RECREATIONAL FACILITIES

Fully-equipped gymnasium.
Furnished lobby entrance.
Landscaped terrace with barbeque pit and party deck.

FALSE CEILING & LIGHT FITTINGS

Saint-Gobain Gypsum false ceiling with architectural
light fixtures in all areas.

COMMON AREAS

Gas bank.
Mitsubishi/equivalent passenger lift.
Imported Marble on all floor lobby areas
and lift wall cladding.
Granite finish staircases.
24/7 CCTV surveillance.
SS handrails on staircases.
False ceiling with COD lights in all lobby areas
and stilt car parking.
Rainwater harvesting.
Separate lines for Metro water and ground water.
Solar-powered common areas.
100% generator backup.

